

Colorado Land For Sale ~ A Natural High ~



Ranches ~ Land ~ Homes ~ Cabins
Central Colorado Mountains



TrueWestColorado.com

Listing Broker: Vicki Garrisi
719.237.1240 (Cell)
Vicki@TrueWestColorado.com



Cripple Creek, Colorado (Teller County)

Price: \$179,000 | Acres: 35.13 +/-

**Thrilling High Mountain Scenery ~ Natural Granite Rock Creations
Borders Mueller State Park ~ Aspens Galore!**

A Natural High is an incredible work of nature's art and an expression of sheer beauty! This special place on earth was perfectly crafted from a blend of bold to sublime. Atop its highpoint you will spin around in every direction and find yourself speechless from the variety of scenery, colors and textures. Dazzling views of prominent snow-capped mountains like Pikes Peak, Sangre de Cristo's and Collegiate Peaks are easily enjoyed from a private building site. Sink into the surrounding aspen groves and look over to the bordering and expansive Mueller State Park. An extensive valley on the property invites you to take memorable hikes through its lush groves of mountain aspens, fir and spruce. Explore all the nooks and crannies of this visibly diverse terrain. Rising up in all directions are towering granite rock creations set against deep blue Colorado skies. You can rest assured that you will experience numerous species of wildlife that you may encounter during your escapades (local herds of big horn sheep, elk, mule deer, bear, mountain lion and turkey). Sunrises and sunsets are another memorable part of your day at A Natural High. As night falls, just imagine star-filled nights, a soft breeze of cool mountain air rustling the aspen leaves and lulling you to sleep. This property is gated and ready to build your mountain cabin or dream home with utilities ready to go at the build site. Located only 20 minutes from Cripple Creek you will have fun experiencing this historic gold mining town from the 1800's. It now offers a variety of local events, small stakes gaming, restaurants and entertainment. Airports, cultural activities and shopping are approximately 1.5 hours from the Property – keeping the hustle and bustle of big city life at bay. If you are a nature lover, rock climber, avid hiker and/or outdoor adventurer, A Natural High is the place to elevate your Colorado mountain dreams.



Views of Mt. Pisgah



Gorgeous Pikes Peak Views



TrueWestColorado.com
719.687.9200 (Office)

821 West Lafayette Avenue, Suite 100 | Woodland Park, CO 80863



~ A Natural High ~

35.13 +/- Acres | Cripple Creek, Colorado (Teller County)

Live Water

None

Mountain Views

Pikes Peak, Sangre De Cristos, Dome, Sheep & Dog Head Rocks, Collegiate Peaks, Mt. Pisgah

Other Views

Wrights Reservoir, Fourmile Valley, Timbered Hillside, Rock Outcroppings, Boulders & Bluffs, Valley, Meadows

Topography

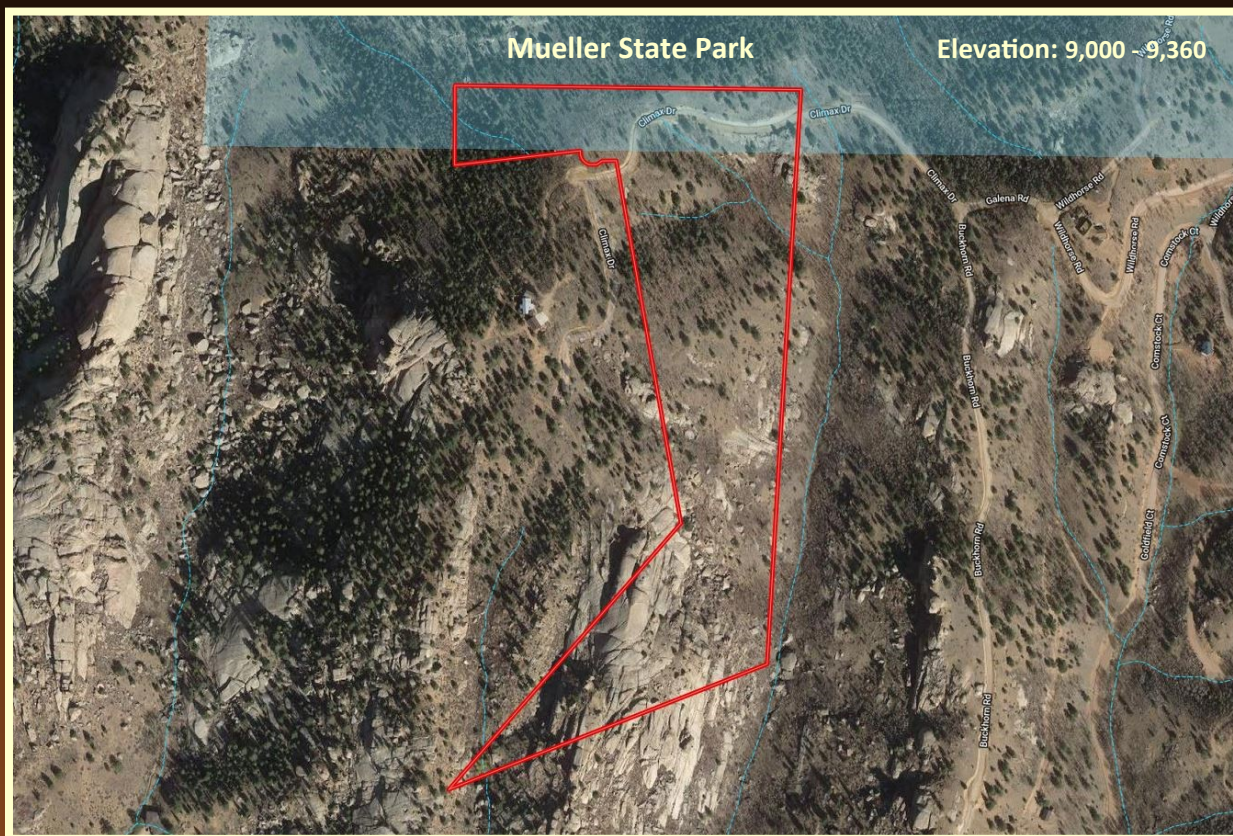
Steep, Valley Gorge, Rock Outcroppings, Boulders and Bluffs

Tree Coverage

Moderate — Aspen, Spruce, Fir, Ponderosa

Vegetation

Native Grass, Scrub Oak, Wild Berries, Wildflowers



Bordering Properties

Mueller State Park (One Side), Private

Nearest Airports

Colorado Springs, Denver

Access

Maintained Year-Round. Gravel County Road to Property Boundary

Latitude: 38.819047

Longitude: - 105.21629

Property Recreation

Hiking, Wildlife Viewing, Camping, Rock Climbing, Nearby Hunting (Big Game & Waterfowl)

Hunting Permitted

No

DOW Area Hunting Unit

581

Listing Broker: Vicki Garrisi | 719.237.1240 (Cell) | Info@TrueWestColorado.com



TrueWestColorado.com
719.687.9200 (Office)

821 West Lafayette Avenue, Suite 100 | Woodland Park, CO 80863

